



**Westport
Veterinary
Clinic**

8 Preston Road,
Linlithgow,
EH49 7AU
01506 844165
Mon -Fri: 8am-6.30pm
Sat: 9am-12pm

59 The Loan,
South Queensferry,
EH30 9SD
0131 331 3451
Mon -Fri: 8am-6.30pm
Sat: 9am-12pm

11 Drumbrae Avenue,
Corstorphine,
EH12 8TE
0131 317 8150
Mon -Fri: 9am-10.30am
& 4.00pm-6.00pm
Sat: 9am-10.30am



Canine Care Sheet

Vaccinations

Regular vaccinations are important to protect your pet against infection with distemper, hepatitis, parvovirus, parainfluenza and leptospirosis. After the primary vaccination course it is important to keep your pet up to date with yearly booster vaccinations to ensure continued protection.

Without a yearly booster, the immunity from the vaccination can quickly wane, leaving your dog at increased risk of infection. For this reason, most reputable kennels won't accept dogs without a vaccination certificate. If a booster vaccination is missed, we may need to give your dog a vaccination restart, consisting of two injections 2-4 weeks apart.

We also advise giving the kennel cough vaccination (included in our Friends of Westport scheme) which will help protect against some highly infectious and potentially serious respiratory infections. These infections can be picked up anywhere, not just from kennels!

Diet

Getting the right nutritional balance is very important at all stages in your pet's life, to ensure healthy development and growth. The best way to achieve this is by feeding a high quality, protein based, balanced diet especially formulated for dogs e.g. Virbac Veterinary HPM.

Veterinary HPM™ is an advanced low-carb, high-protein formulation specifically designed to support the long-term health and well-being of cats and dogs, the highly evolved carnivores in our own homes. Please speak to one of our nurses and we will be able to work out exactly what and how much food your dog should be getting to help to keep them as healthy as possible.



Friends of Westport

Prevention is better than cure so we want to make preventative health care easy and affordable. Our Friends of Westport scheme covers the

preventative treatments your pet needs throughout life, such as vaccinations, flea and worm treatments and regular health checks.

Using our scheme can save up to 44% on just the essential preventative health care.

Extra benefits include a **10% discount** off nearly everything (most products and procedures undertaken exclusively at our practice). For more information please feel free to pick up a leaflet or speak to one of our team.

Flea and Worming treatments

The monthly treatment we advise is Prinovox; this spot-on treatment provides good, reliable protection against fleas and some worms and is also one of the few products licensed to prophylactically treat lungworm (*Angiostrongylus vasorum*) when used routinely. Lungworm can cause serious health problems and prevention is always better than cure, especially as we now know it is spreading and has been reported in central Scotland. We advise treating against tapeworm once every 3 months – this is important for your dog's as well as your own protection.

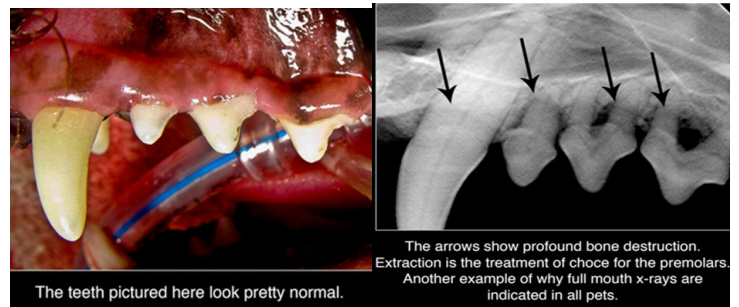
FOWP Health Care Savings*			
	Pay as you go/ Year	FOWP/ Month	Savings/ Year
Small Dog (<10kg)	£263.48	£13.50	£101.48
Med Dog (10-25kg)	£310.40	£14.50	£136.40
Large Dog (25-40kg)	£344.60	£16.00	£152.60
Giant Dog (>40kg)	£488.98	£24.00	£200.98

*Does not include the additional 10% discount on most products and services



Dental Care

Periodontal disease is a serious but sometimes overlooked health issue; indeed, more than 87% of dogs over 3 years of age have some form of this progressive, degenerative disease. Dogs are very good at hiding dental pain from us, but believe us, it is sore!



It can also be quite difficult to spot – our dogs can have severe dental disease even with minor plaque build-up, as shown in the images above. The best way to manage these conditions is preventively by brushing their teeth. We also advise using Healthymouth water additive, which has been shown to reduce plaque build up in dogs by an average of 74.3%. Please discuss with our vets and nurses who will show you how to introduce dental care products.

Insurance

We strongly advise getting your pet insured, a lifetime policy is the most comprehensive cover available. We work in partnership with Petplan to offer 4 weeks free insurance to dogs between 6 weeks and 18 months of age as **Instant Protection**, we can start the process after your dog has seen a vet. This will be activated by yourself via the email you receive from Petplan. If you have any questions please ask one of our team.

Senior Pet Clinic

As dogs and cats approach their senior years, they are more prone to developing health issues. We cannot reverse this ageing process, but the earlier these problems are picked up, the more we can do to help manage them.

We advise attending our Senior Pet Clinic. Your pet will stay with us just for the day and this will allow us to test for some underlying conditions that are common in older animals, such as:

- **Kidney Disease** – We only see clinical signs when at least 75% of the kidneys have stopped working, but quite often pick up early renal failure on routine bloods.
- **Osteoarthritis** – Older animals becoming stiff and slowing down is a commonly reported issue. However this is not 'normal' and is often as a result of disease processes which can be managed.
- **Dental disease** – More than 87% of dogs >3 years old and 90% of cats have some form of this progressive, degenerative disease. This doesn't only affect the teeth; there are strong links between dental disease and internal problems such as chronic kidney disease and heart failure.
- **Hypertension** – High blood pressure often goes unnoticed but has potentially severe consequences for many organs, especially the eyes, heart and vasculature, brain and kidneys. It is also useful to get a baseline value and the international society of feline medicine recommends that this should be done at least yearly in senior pets.
- **Liver disease** – This can be serious condition but high liver enzymes in the blood can also be indicative of other diseases such as Cushings disease or some cancers.

What's Included?

- Complete clinical exam
- Blood pressure checks
- Blood tests – to check liver, kidneys, haematology and (in cats) thyroid hormone levels
- Urinalysis
- Dental check
- Weight check
- Nurse consultation
- Vet consultation

With all of these conditions, the earlier we start treatment/ preventative management strategies, the more we can do to help achieve a positive outcome. For more information please speak to our vets and nurses.